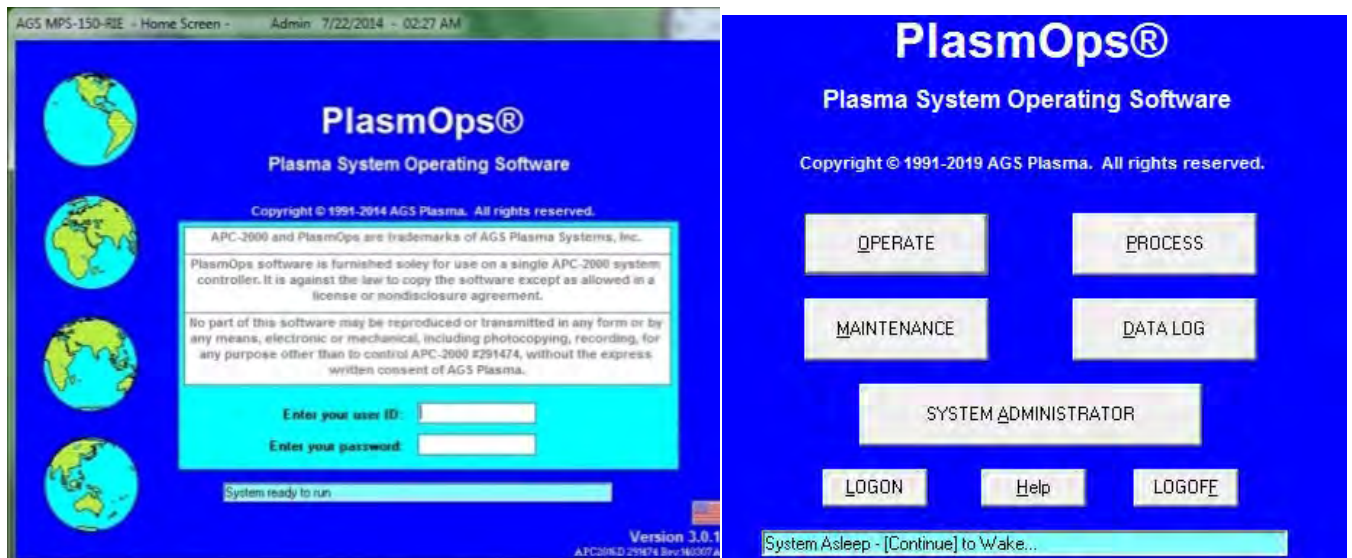


AGS Reactive Ion Etcher (Metal) SOP

3/6/2024

1. Log onto the PlasmOPs program with username “guest” and password “guest”



2. Click “operate” at the home page. Ready to load your sample in the loadlock. **Turn on** the front panel power supply and match controller MC2.



3. Click “Continue” and the system will automatically start all the pumps and chiller through sequences. Then, double click “FlowSw”



to clear the error message.

AGS MPS-150L-RIE System - Operate Screen - Engin 1/15/2019 - 04:08 PM

0%

Out
Arms

Vent N2

>760 T

Atm

Ldiso

Down
Pins

>760 T

Offline

0.1sccm - BCl3
1.2sccm - Cl2
0.8sccm - CF4
0.3sccm - Ar
1.8sccm - O2

Vent N2

2.0 mT 0%
Close

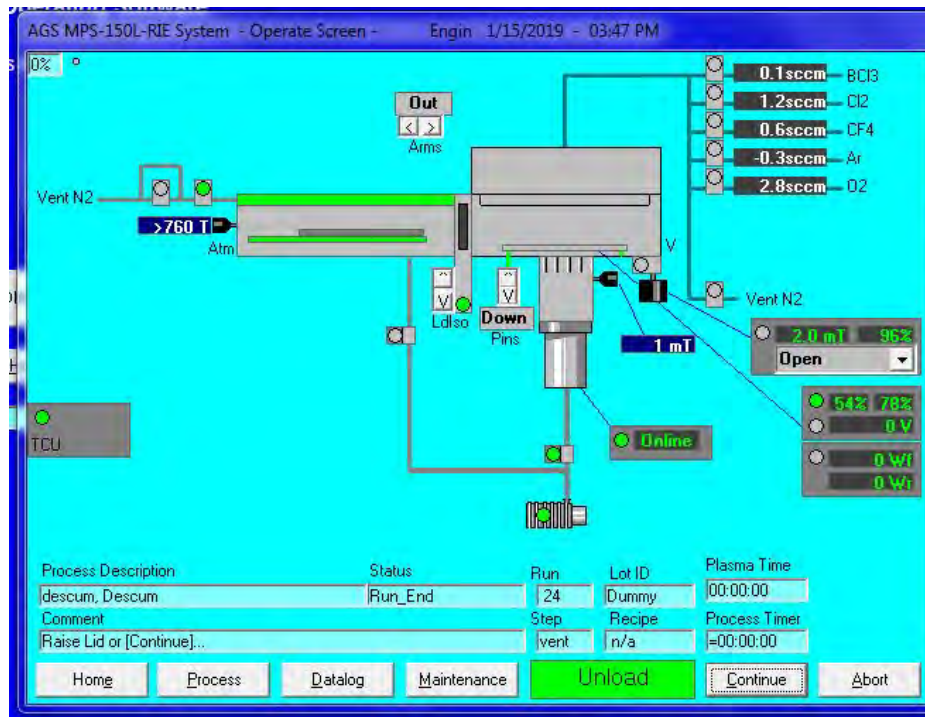
54% 78%
0 V
0 Wf
0 Wi

TCU

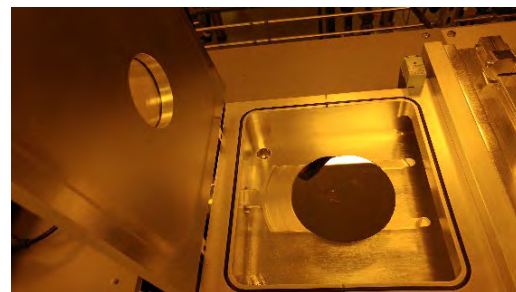
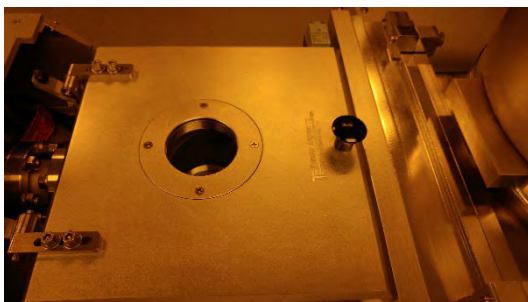
Process Description	Status	Run	Lot ID	Plasma Time
ma_idle.	Sleep	25	n/a	00:00:19
Comment	Step	Recipe	Process Timer	
System Asleep - [Continue] to Wake...	1 of 1	HOLD	=00:00:00	

Home Process Datalog Maintenance **FlowSw** Continue Abort

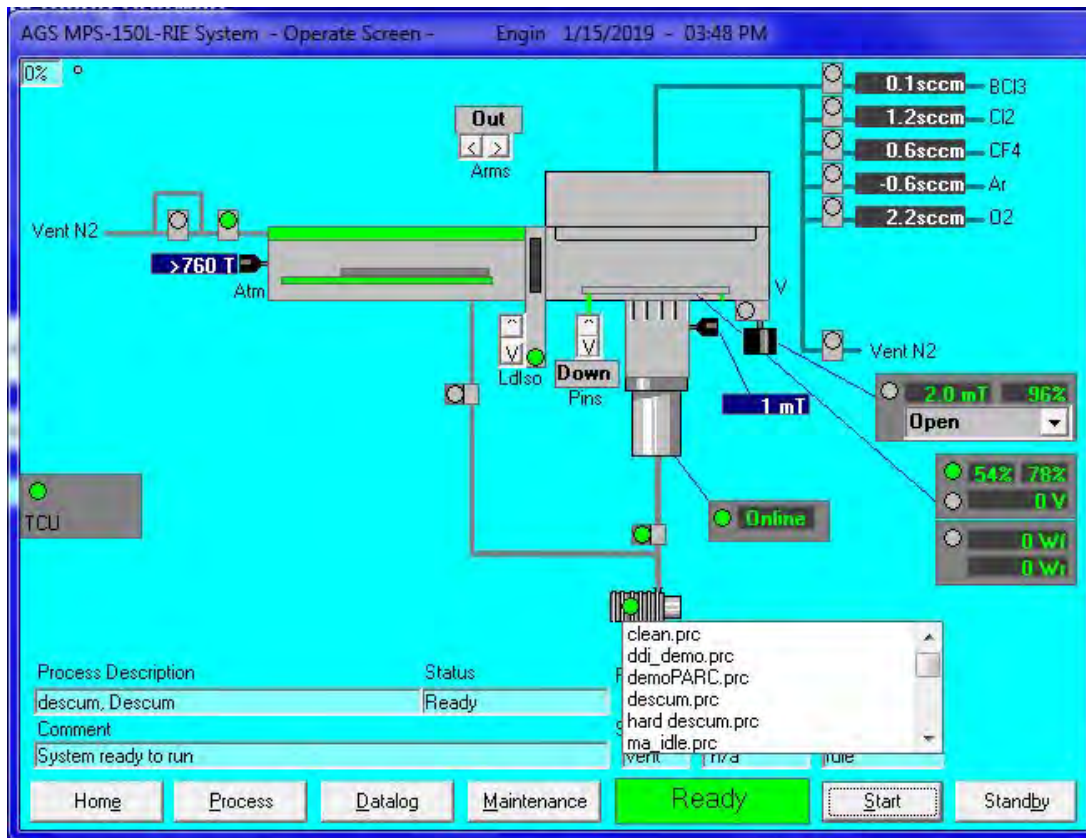
4. Once “unload” is shown, ready for loading sample.



5. Open loadlock and tape small sample onto the wafer. For wafer samples, remove the loading wafer and directly put your wafer sample onto the transfer arm.

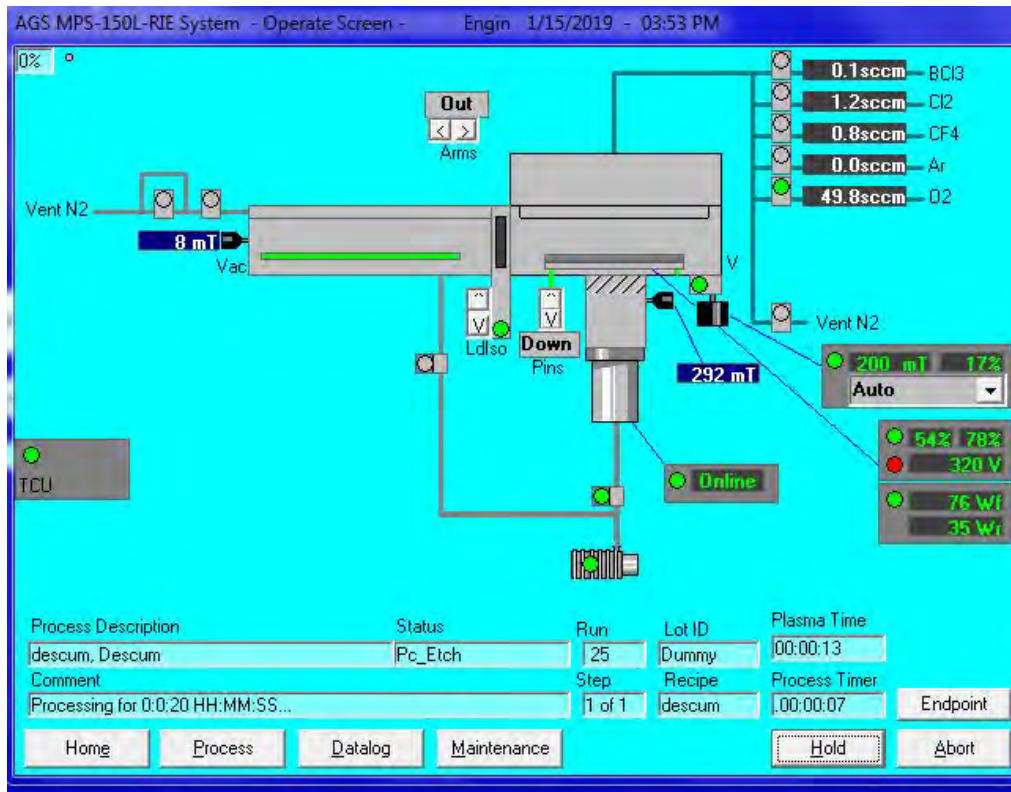


6. The system shows “Ready” once chiller and pump are on line. Recipes can be chosen through a recipe window. Click the recipe you want to run. Then click start to run.



7. The system will run the recipe automatically. It will show the process steps under “comment”

Power data and plasmas indication will be shown when the etching process step starts



8. Once the recipe is over. The chamber should be vented and ready for unload. Unload your sample and close the cover.

9. Shutting down the system:

1. Run the “ma_idle.prc” process. The system will automatically shut off everything through the process.



2. Click “Home” to go back to home page and click “LOG OFF”

3. Turn off the RF power supply from the front panel.

4. Log off FOM.